

Valcarb

Metalcutting Tools, Fluids & Accessories



CATALOG
2019 - 2020

905-597-7705

www.valcarb.com

service@valcarb.com

Table of Contents

Standard Carbide Endmills.....	4-5
High Performance Carbide Endmills.....	6-8
EXOTAPA-TAP.....	10-11
Forming Taps.....	11-12
Multi Taps.....	12-16
Rotary Tooling.....	17-19
Indexable High Milling Tools.....	19
ERCollets.....	20-21
Drills.....	22-30
Thread Mill.....	31



Since 2010, Valcarb Industrial has been providing an extensive line of Cutting Tools, Abrasives, Metalworking Fluids, and other accessories to Machining and Metalworking Industry.

At Valcarb we endeavor to deliver outstanding products and services considering our customer needs. We suggest and supply Cutting Tools, Accessories, and Metalworking Fluids most suitable for their applications.

Valcarb speaks to World-class Cutting Tool Manufacturers and separates itself by providing the most ideal choice of application with the support from our highly trained sales force.

We distribute a vast line of Drills, taps, thread mills, endmills, tool holders, clamping devices, measuring solutions, fluids and other rotary cutting tools.

2&4 Flute Regular Length

2 FL Uncoated	4 FL Coated	Mill Diameter	Shank Diameter	Length of cut	Overall Length	Price
01552		1/32	1/8	5/64	1-1/2	
01553		3/64	1/8	7/64	1-1/2	
01554	07554TF	1/16	1/8	3/16	1-1/2	
01555	07555TF	5/64	1/8	3/16	1-1/2	
01556	07556TF	3/32	1/8	3/8	1-1/2	
01557	07557TF	7/64	1/8	3/8	1-1/2	
01558	07558TF	1/8	1/8	1/2	1-1/2	
01560	07560TF	9/64	3/16	1/2	2	
01562	07561TF	5/32	3/16	9/16	2	
01564	07564TF	11/64	3/16	5/8	2	
01565	07565TF	3/16	3/16	5/8	2	
01569	07569TF	13/64	1/4	5/8	2-1/2	
01570	07570TF	7/32	1/4	5/8	2-1/2	
01572	07572TF	15/64	1/4	3/4	2-1/2	
01573	07573TF	1/4	1/4	3/4	2-1/2	
01579	07579TF	5/16	5/16	13/16	2-1/2	
01584	07584TF	3/8	3/8	1	2-1/2	
01588	07588TF	7/16	7/16	1	2-3/4	
01593	07593TF	1/2	1/2	1	3	
01595	07595TF	5/8	5/8	1-1/4	3-1/2	
01598	07598TF	3/4	3/4	1-1/2	4	
01600	07600TF	1	1	1-1/2	4	


2&4 Flute Long Length

2 FL Uncoated	4 FL Coated	Mill Diameter	Shank Diameter	Length of cut	Overall Length	Price
02558	08558TF	1/8	1/8	3/4	2-1/4	
02565	08565TF	3/16	3/16	3/4	2-1/2	
02573	08573TF	1/4	1/4	1-1/8	3	
02579	08579TF	5/16	5/16	1-1/8	3	
02584	08584TF	3/8	3/8	1-1/8	3	
02588	08588TF	7/16	7/16	2	4	
02593	08593TF	1/2	1/2	2	4	
02595	08595TF	5/8	5/8	2-1/4	5	
02598	08598TF	3/4	3/4	2-1/4	5	
02600	08600TF	1	1	2-1/4	5	


2&4 Flute Extra Long Length

2 FL Uncoated	4 FL Coated	Mill Diameter	Shank Diameter	Length of cut	Overall Length	Price
54558	55558TF	1/8	1/8	1	3	
54565	55565TF	3/16	3/16	1-1/8	3	
54904	55904TF	3/16	3/16	1	4	
54573	55573TF	1/4	1/4	1-1/2	4	
54901	55901TF	1/4	1/4	1-1/2	6	
54579	55579TF	5/16	5/16	1-5/8	4	
54584	55584TF	3/8	3/8	1-3/4	4	
54902	55902TF	3/8	3/8	1-1/2	6	
54588	55588TF	7/16	7/16	3	6	
54903	55903TF	1/2	1/2	1-1/2	6	
54593	55593TF	1/2	1/2	3	6	
54595	55595TF	5/8	5/8	3	6	
54598	55598TF	3/4	3/4	3	6	
54600	55600TF	1	1	3	6	





2&4 Regular Length Ball Nose

2 FL Uncoated	4 FL Coated	Mill Diameter	Shank Diameter	Length of cut	Overall Length	Price
41558	43558TF	1/8	1/8	1/2	1-1/2	
41561	43561TF	5/32	3/16	9/16	2	
41565	43565TF	3/16	3/16	5/8	2	
41570	43570TF	7/32	1/4	5/8	2-1/2	
41573	43573TF	1/4	1/4	3/4	2-1/2	
41579	43579TF	5/16	5/16	13/16	2-1/2	
41584	43584TF	3/8	3/8	1	2-1/2	
41588	43588TF	7/16	7/16	1	2-3/4	
41593	43593TF	1/2	1/2	1	3	
41595	43595TF	5/8	5/8	1-1/4	3-1/2	
41598	43598TF	3/4	3/4	1-1/2	4	
41600	43600TF	1	1	1-1/2	4	

4 Flute Long & Extra Long Length Ball Nose

4 FL Coated	Mill Diameter	Shank Diameter	Length of cut	Overall Length	Price
51558TF	1/8	1/8	3/4	2-1/4	
51565TF	3/16	3/16	3/4	2-1/2	
51573TF	1/4	1/4	1-1/8	3	
51579TF	5/16	5/16	1-1/8	3	
51584TF	3/8	3/8	1-1/8	3	
51588TF	7/16	7/16	2	4	
51593TF	1/2	1/2	2	4	
51595TF	5/8	5/8	2-1/4	5	
51598TF	3/4	3/4	2-1/4	5	
51600TF	1	1	2-1/4	5	
53558TF	1/8	1/8	1	3	
53565TF	3/16	3/16	1-1/8	3	
53573TF	1/4	1/4	1-1/2	4	
53901TF	1/4	1/4	1-1/2	6	
53579TF	5/16	5/16	1-5/8	4	
53584TF	3/8	3/8	1-3/4	4	
53902TF	3/8	3/8	1-1/2	6	
53588TF	7/16	7/16	3	6	
53903TF	1/2	1/2	1-1/2	6	
53593TF	1/2	1/2	3	6	
53595TF	5/8	5/8	3	6	
53904TF	5/8	5/8	1-1/2	6	
53598TF	3/4	3/4	3	6	
53905TF	3/4	3/4	1-1/2	6	
53600TF	1	1	3	6	
53906TF	1	1	1-1/2	6	



4 Flute Square (Sharp Corner)

EDP Plain	EDP Flat	Mill Diameter	Shank Diameter	Length of cut	Overall Length	Price
GMF68008		1/8	1/8	1/8	1-1/2	
GMF68901		1/8	1/8	3/8	1-1/2	
GMF68010		5/32	3/16	3/16	2	
GMF68902		5/32	3/16	7/16	2	
GMF68012		3/16	3/16	3/16	2	
GMF68903		3/16	3/16	7/16	2	
GMF68014		7/32	1/4	1/4	2	
GMF68904		7/32	1/4	7/16	2-1/2	
GM99931305		1/4	1/4	1/2	2-1/2	
GMF68918		1/4	1/4	1/2	2-1/2	
GMF68016		1/4	1/4	3/8	2	
GMF68905		1/4	1/4	3/4	2-1/2	
GMF68018		9/32	5/16	5/8	2-1/2	
GMF68020		5/16	5/16	7/16	2	
GMF68906		5/16	5/16	13/16	2-1/2	
GM99931306		5/16	5/16	1-1/4	3-1/4	
	GMF69022	11/32	3/8	1/2	2-1/2	
	GMF69024	3/8	3/8	1/2	2-1/2	
	GMF69907	3/8	3/8	7/8	2-1/2	
	GM99931307	3/8	3/8	1	2-1/2	
	GM99931308	3/8	3/8	1-1/2	4	
	GMF69028	7/16	7/16	5/8	2-1/2	
	GMF69908	7/16	7/16	1	2-3/4	
	GMF69032	1/2	1/2	5/8	2-1/2	
	GM99931309	1/2	1/2	1/2	3	
	GMF69909	1/2	1/2	1	3	
	GM99931310	1/2	1/2	1-1/4	3	
	GMF69910	1/2	1/2	1-1/4	3-1/2	
	GM99931311	1/2	1/2	1-1/2	3-1/2	
	GM99931312	1/2	1/2	1-5/8	3-1/2	
	GM99931313	1/2	1/2	2	4	
	GMF69040	5/8	5/8	3/4	3	
	GMF69911	5/8	5/8	1-1/4	3-1/2	
	GM99931314	5/8	5/8	1-5/8	3-1/2	
	GM99931315	5/8	5/8	2	4	
	GM99931316	5/8	5/8	2-1/8	4	
	GMF69048	3/4	3/4	3/4	3	
	GMF69912	3/4	3/4	1-1/2	4	
	GM99931317	3/4	3/4	1-5/8	4	
	GM99931318	3/4	3/4	2	4	
	GMF69064	1	1	1	4	
	GMF69913	1	1	1-1/2	4	
	GMF69914	1	1	2	5	



4 Flute Square (Sharp Corner) Metric

EDP Plain	EDP Flat	Mill Diameter	Shank Diameter	Length of cut	Overall Length	Price
GM99931391		3	6	8	57	
GM99931392		4	6	11	57	
GM99931393		5	6	13	57	
GM99931394		6	6	13	57	
GM99931395		8	8	19	63	
GM99931396		10	10	22	72	
	GM99931397	12	12	26	83	
	GM99931398	14	14	26	83	
	GM99931399	16	16	32	92	
	GM99931400	18	18	32	92	
	GM99931401	20	20	38	104	
	GM99931402	25	25	38	104	



4 Flute Corner Radius

EDP Plain	EDP Flat	Mill Diameter	Shank Diameter	Length of cut	Overall Length	Corner Radius	Price
GM99931319		1/8	1/8	1/8	1-1/2	R.015	
GM99931320		1/8	1/8	3/8	1-1/2	R.015	
GMF70902		1/8	1/8	3/8	1-1/2	R.030	
GM99931321		5/32	3/16	7/16	2	R.015	
GM99931322		3/16	3/16	3/16	2	R.015	
GM99931323		3/16	3/16	7/16	2	R.015	
GMF70904		3/16	3/16	7/16	2	R.030	
GM99931324		1/4	1/4	1/2	2	R.015	
GMF70905		1/4	1/4	3/8	2	R.030	
GMF70906		1/4	1/4	3/8	2	R.060	
GM99931325		1/4	1/4	1/2	2	R.030	
GM99931326		1/4	1/4	1/2	2	R.060	
GMF70908		1/4	1/4	3/4	2-1/2	R.015	
GMF70909		1/4	1/4	3/4	2-1/2	R.030	
GMF70020		5/16	5/16	7/16	2	R.030	
GM99931327		5/16	5/16	13/16	2-1/2	R.015	
GMF70911		5/16	5/16	13/16	2-1/2	R.030	
GMF70912		5/16	5/16	13/16	2-1/2	R.060	
	GM99931328	3/8	3/8	1/2	2-1/2	R.015	
	GMF71913	3/8	3/8	1/2	2-1/2	R.030	
	GMF71914	3/8	3/8	1/2	2-1/2	R.060	
	GM99931329	3/8	3/8	7/8	2-1/2	R.015	
	GMF71916	3/8	3/8	7/8	2-1/2	R.030	
	GMF71917	3/8	3/8	7/8	2-1/2	R.060	
	GM99931330	3/8	3/8	1-1/4	2-1/2	R.015	
	GM99931331	3/8	3/8	1-1/4	2-1/2	R.030	
	GM99931332	3/8	3/8	1-1/4	2-1/2	R.060	



Cont'd next page...

4 Flute Corner Radius

EDP Plain	EDP Flat	Mill Diameter	Shank Diameter	Length of cut	Overall Length	Corner Radius	Price
	GMF71028	7/16	7/16	5/8	2-1/2	R.015	
	GMF71918	7/16	7/16	5/8	2-1/2	R.030	
	GM99931431	7/16	7/16	1	2-3/4	R.015	
	GMF71920	7/16	7/16	1	2-3/4	R.030	
	GMF71921	7/16	7/16	1	2-3/4	R.060	
	GMF71922	1/2	1/2	5/8	2-1/2	R.015	
	GMF71923	1/2	1/2	5/8	2-1/2	R.030	
	GMF71924	1/2	1/2	5/8	2-1/2	R.060	
	GM99931333	1/2	1/2	1	3	R.015	
	GMFF71926	1/2	1/2	1	3	R.030	
	GMF71927	1/2	1/2	1	3	R.060	
	GM99931334	1/2	1/2	1	3	R.090	
	GMF71928	1/2	1/2	1	3	R.125	
	GM99931335	1/2	1/2	1-1/4	3	R.015	
	GM99931336	1/2	1/2	1-1/4	3	R.030	
	GM99931337	1/2	1/2	1-1/4	3	R.060	
	GM99931338	1/2	1/2	1-1/4	3	R.090	
	GM99931339	1/2	1/2	1-1/4	3	R.120	
	GMF71930	1/2	1/2	1-1/4	3-1/2	R.015	
	GMF71931	1/2	1/2	1-1/4	3-1/2	R.030	
	GMF71932	1/2	1/2	1-1/4	3-1/2	R.060	
	GMF71933	1/2	1/2	1-1/4	3-1/2	R.125	
	GM99931340	1/2	1/2	1-5/8	4	R.015	
	GM99931341	1/2	1/2	1-5/8	4	R.030	
	GM99931342	1/2	1/2	1-5/8	4	R.060	
	GM99931343	1/2	1/2	1-5/8	4	R.090	
	GM99931344	1/2	1/2	2	4	R.015	
	GM99931345	1/2	1/2	2	4	R.030	
	GM99931346	1/2	1/2	2	4	R.060	
	GM99931347	1/2	1/2	2	4	R.090	
	GMF71S958	1/2	1/2	2	4	R.090	
	GMF71937	5/8	5/8	1-1/4	3-1/2	R.015	
	GMF71938	5/8	5/8	1-1/4	3-1/2	R.030	
	GMF71939	5/8	5/8	1-1/4	3-1/2	R.060	
	GM99931349	5/8	5/8	1-1/4	3-1/2	R.090	
	GMF71940	5/8	5/8	1-1/4	3-1/2	R.125	
	GM99931350	5/8	5/8	1-5/8	3-1/2	R.015	
	GM99931351	5/8	5/8	1-5/8	3-1/2	R.030	
	GM99931352	5/8	5/8	1-5/8	3-1/2	R.060	
	GM99931356	5/8	5/8	2-1/4	4	R.015	
	GM99931357	5/8	5/8	2-1/4	4	R.030	
	GM99931358	5/8	5/8	2-1/4	4	R.060	
	GMF71048	3/4	3/4	3/4	3	R.030	



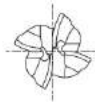
Cont'd next page...

4 Flute Corner Radius

EDP Plain	EDP Flat	Mill Diameter	Shank Diameter	Length of cut	Overall Length	Corner Radius	Price
	GMF71941	3/4	3/4	3/4	3	R.060	
	GM99931360	3/4	3/4	1-5/8	4	R.015	
	GM99931361	3/4	3/4	1-5/8	4	R.030	
	GM99931362	3/4	3/4	1-5/8	4	R.060	
	GM99931363	3/4	3/4	2-1/4	5	R.015	
	GM99931364	3/4	3/4	2-1/4	5	R.030	
	GM99931365	3/4	3/4	2-1/4	5	R.060	
	GMF71064	1	1	1	4	R.015	
	GMF71946	1	1	1	4	R.030	
	GMF71947	1	1	1	4	R.060	
	GMF71948	1	1	1-1/2	4	R.015	
	GMF71949	1	1	1-1/2	4	R.030	
	GMF71950	1	1	1-1/2	4	R.060	
	GMF71951	1	1	1-1/2	4	R.125	
	GM99931369	1	1	2-1/4	5	R.015	
	GM99931370	1	1	2-1/4	5	R.030	
	GM99931371	1	1	2-1/4	5	R.060	

4 Flute Ball Nose Inch & Metric

EDP Plain	EDP Flat	Mill Diameter	Shank Diameter	Length of cut	Overall Length	Price
	GMG53008	0.125	0.125	3/8	1-1/2	
	GMG53010	0.156	0.188	7/16	2	
	GMG53012	0.188	0.188	7/16	2	
	GMG53016	0.25	0.25	1/2	2-1/2	
	GM99931389	0.25	0.25	3/4	2-1/2	
	GMG53020	0.313	0.313	13/16	2-1/2	
	GMG54024	0.375	0.375	7/8	2-1/2	
	GMG54032	0.5	0.5	1	3	
	GM99931390	0.5	0.5	1-1/4	3	
	GMG54040	0.625	0.625	1-1/4	3-1/2	
	GMG54048	0.75	0.75	1-1/2	4	
	GMG54064	1	1	1-1/2	4	
	GMG55030	3	6	8	57	
	GMG55040	4	6	11	57	
	GMG55050	5	6	13	57	
	GMG55060	6	6	13	57	
	GMG55080	8	8	19	63	
	GMG55100	10	10	22	72	
	GMG55120	12	12	26	83	
	GMG55160	16	16	32	92	
	GMG55200	20	20	38	104	
	GMG55250	25	25	38	104	



Spiral Flute Inch & Metric

EDP	Tap Size	Thread Limit	No. of Flutes	Overall length	Neck Length	Price
1650508908	4-40 UNC	H2	2	56	19	
1650509008	6-32 UNC	H2	3	56	19	
1650509608	8-32 UNC	H2	3	63	22	
1650509908	10-24 UNC	H3	3	70	26	
1670510008	10-32 UNF	H2	3	70	26	
1650510608	1/4-20 UNC	H3	3	80	32	
1650510908	1/4-28 UNF	H3	3	80	32	
1650511108	5/16-18 UNC	H3	3	90	35	
1650511308	5/16-24 UNF	H3	3	90	35	
1650511608	3/8-16 UNC	H3	3	100	39	
1650511808	3/8-24 UNF	H3	3	90	35	
1650512108	7/16-14 UNC	H3	3	100	43	
1650512308	7/16-20 UNF	H3	3	100	43	
1650512608	1/2-13 UNC	H3	3	110	49	
1650512808	1/2-20 UNF	H3	3	100	49	
1650503708	9/16-12 UNC	H3	3	110	50	
1650503908	9/16-18 UNF	H3	3	100	50	
1650504108	5/8-11 UNC	H3	3	110	54	
1650504308	5/8-18 UNF	H3	3	100	54	
1650504508	3/4-10 UNC	H3	4	125	61	
1650504708	3/4-16 UNF	H3	4	110	61	
1650504908	7/8-9 UNC	H4	4	140	67	
1650505108	7/8-14 UNF	H4	4	125	67	
1650505208	1-8 UNC	H4	4	140	68	
1650010208	M4x0.7	D4	3	63	22	
1650010608	M5x0.8	D4	3	70	27	
1650011008	M6x1.0	D5	3	80	32	
1650011508	M8x1.25	D5	3	80	35	
1650012108	M10x1.25	D5	3	100	39	
1650012808	M12x1.25	D6	3	100	49	





Spiral Point Inch & Metric

EDP	Tap Size	Thread Limit	No. of Flutes	Overall length	Neck Length	Price
1651500108	4-40 UNC	H2	2	56	19	
1651500608	6-32 UNC	H2	2	56	21	
1651500908	8-32 UNC	H2	2	63	22	
1651501108	10-24 UNC	H3	2	70	26	
1651501308	10-32 UNF	H2	2	70	26	
1651501708	1/4-20 UNC	H3	3	80	32	
1651501908	1/4-28 UNF	H3	3	80	32	
1651502108	5/16-18 UNC	H3	3	90	38	
1651502308	5/16-24 UNF	H3	3	90	38	
1651502508	3/8-16 UNC	H3	3	100	43	
1651502708	3/8-24 UNF	H3	3	90	39	
1651502908	7/16-14 UNC	H3	3	100	32	
1651503108	7/16-20 UNF	H3	3	100	32	
1651503308	1/2-13 UNC	H3	3	110	34	
1651503508	1/2-20 UNF	H3	3	100	34	
1651503708	9/16-12 UNC	H3	3	110	37	
1651503908	9/16-18 UNF	H3	3	100	37	
1651504108	5/8-11 UNC	H3	3	110	39	
1651504308	5/8-18 UNF	H3	3	100	39	
1651504508	3/4-10 UNC	H3	3	125	43	
1651504708	3/4-16 UNF	H3	3	110	43	
1651504908	7/8-9 UNC	H3	3	140	47	
1651505108	7/8-14 UNF	H3	3	125	47	
1651505308	1-8 UNC	H4	3	160	53	
1651000308	M4x0.7	D4	3	63	22	
1651000508	M5x0.8	D4	3	70	27	
1651000708	M6x0.75	D4	3	80	32	
1651001008	M8x1.25	D5	3	90	38	
1651001508	M12x1.25	D6	3	100	32	



HY-PRO NRT Inch

EDP	Tap Size	Lead	Thread Limit	Tap Drill Size		Price
				Min	Max	
1400104908	4-40 UNC	1.5 P	H3	0.099	0.102	
1400110008	6-32 UNC	1.5 P	H3	0.122	0.125	
1400113908	8-32 UNC	1.5 P	H3	0.148	0.151	
1400117808	10-24 UNC	1.5 P	H3	0.169	0.1730	
1400125608	1/4-20 UNC	1.5 P	H5	0.225	0.230	
1400127808	1/4-28 UNF	1.5 P	H4	0.232	0.235	
1400130008	5/16-18 UNC	1.5 P	H6	0.284	0.290	
1400132208	5/16-24 UNF	1.5 P	H4	0.291	0.296	
1400134508	3/8-16 UNC	1.5 P	H5	0.343	0.350	



Cont'd next page...

EXOTAP A-TAP

Forming Taps

Forming Taps

HY-PRO NRT Inch & Metric

EDP	Tap Size	Lead	Thread Limit	Tap Drill Size		Price
				Min	Max	
1400136808	3/8-24 UNF	1.5 P	H4	0.354	0.358	
1400139108	7/16-14 UNC	2.5 P	H4	0.401	0.408	
1400140908	7/16-20 UNF	2.5 P	H4	0.412	0.417	
1400142708	1/2-13 UNC	2.5 P	H4	0.461	0.469	
1400144508	1/2-20 UNF	2.5 P	H4	0.475	0.480	
1410100408	M2 x 0.4	1.5 P	D3	1.8	1.84	
1410101408	M3 x 0.5	1.5 P	D3	2.75	2.8	
1410102408	M4 x 0.7	1.5 P	D4	3.64	3.71	
1410103008	M5 x 0.8	1.5 P	D4	4.59	4.67	
1410103906	M6 x 1.0	1.5 P	D5	5.49	5.59	
1410104208	M8 x 1.25	1.5 P	D5	7.36	7.49	
1410104808	M10 x 1.5	1.5 P	D6	9.24	9.39	
1410105408	M12 x 1.75	1.5 P	D6	11.11	11.29	



Multi Taps

Spiral Point Taps

Ne2 Coated	TICN Coated	Size	Overall Length (in)	Shank Diameter (in)	Price
BU497300.5003	BU499300.5003	4-40 NC	2.205	0.141	
BU497300.5004	BU499300.5004	5-40 NC	2.205	0.141	
BU497300.5005	BU499300.5005	6-32 NC	2.205	0.141	
BU497300.5006	BU499300.5006	8-32 NC	2.480	0.168	
BU497300.5007	BU499300.5007	10-24 NC	2.756	0.194	
BU497300.5008	BU499300.5008	12-24 NC	3.150	0.220	
BU497300.5009	BU499300.5009	1/4-20 NC	3.150	0.255	
BU497300.5010	BU499300.5010	5/16-18 NC	3.543	0.318	
BU497300.5011	BU499300.5011	3/8-16 NC	3.937	0.381	
CU497300.5012	CU499300.5012	7/16-14 NC	3.937	0.323	
CU497300.5013	CU499300.5013	1/2-13 NC	3.937	0.367	
CU497300.5014	CU499300.5014	9/16-12 NC	3.937	0.429	
CU497300.5015	CU499300.5015	5/8-11 NC	3.937	0.480	
CU497300.5016	CU499300.5016	3/4-10 NC	4.330	0.590	
CU497300.5017	CU499300.5017	7/8-9 NC	4.921	0.697	
CU497300.5018	CU499300.5018	1"-8 NC	5.512	0.800	
BU497300.5037	BU499300.5037	4-48 NF	2.205	0.141	
BU497300.5038	BU499300.5038	5-44 NF	2.205	0.141	
BU497300.5039	BU499300.5039	6-40 NF	2.205	0.141	
BU497300.5040	BU499300.5040	8-36 NF	2.480	0.168	
BU497300.5041	BU499300.5041	10-32 NF	2.756	0.194	
BU497300.5042	BU499300.5042	12-28 NF	3.150	0.220	
BU497300.5043	BU499300.5043	1/4-28 NF	3.150	0.255	
BU497300.5044	BU499300.5044	5/16-24 NF	3.543	0.318	
BU497300.5045	BU499300.5045	3/8-24 NF	3.937	0.381	



Cont'd next page...



Spiral Point Taps					
Ne2 Coated	TiCN Coated	Size	Overall Length (in)	Shank Diameter (in)	Price
CU497300.5046	CU499300.5046	7/16-20 NF	3.937	0.323	
CU497300.5047	CU499300.5047	1/2-20 NF	3.937	0.367	
CU497300.5048	CU499300.5048	9/16-18 NF	3.937	0.429	
CU497300.5049	CU499300.5049	5/8-18 NF	3.937	0.480	
CU497300.5050	CU499300.5050	3/4-16 NF	4.330	0.590	
CU497300.5051	CU499300.5051	7/8-14 NF	4.921	0.697	
CU497300.5052	CU499300.5052	1"-12 NF	5.512	0.800	

Spiral Point Taps Metric

Ne2 Coated	TiCN Coated	Size	Overall Length(mm)	Shank Diameter (in)	Price
BU497300.0040	BU499300.0040	M 4x0.7	63	0.168	
BU497300.0050	BU499300.0050	M 5x0.8	70	0.194	
BU497300.0060	BU499300.0060	M 6x1.0	80	0.255	
BU497300.0080	BU499300.0080	M 8x1.25	90	0.318	
BU497300.0100	BU499300.0100	M 10x1.5	100	0.381	
CU497300.0112	CU499300.0112	M 12x1.75	110	0.367	
CU497300.0116	CU499300.0116	M 16x2.0	110	0.48	
CU497300.0118	CU499300.0118	M 18x2.5	125	0.542	
CU497300.0120	CU499300.0120	M 20x2.5	140	0.652	
CU497300.0124	CU499300.0124	M 24x3.0	160	0.76	



Ne2 Coated	TiCN Coated	Size	Overall Length (mm)	Shank Diameter (mm)	Price
B1577300.0040	B1579300.0040	M 4x0.7	63	4.5	
B1577300.0050	B1579300.0050	M 5x0.8	70	6.0	
B1577300.0060	B1579300.0060	M 6x1.0	80	6.0	
B1577300.0080	B1579300.0080	M 8x1.25	90	8.0	
B1577300.0100	B1579300.0100	M 10x1.5	100	10.0	
C1577300.0112	C1579300.0112	M 12x1.75	110	9.0	
C1577300.0116	C1579300.0116	M 16x2.0	110	12.0	
C1577300.0118	C1579300.0118	M 18x2.5	125	14.0	
C1577300.0120	C1579300.0120	M 20x2.5	140	16.0	
C1577300.0124	C1579300.0124	M 24x3.0	160	18.0	

Spiral Flute Taps

Ne2 Coated	TiCN Coated	Size	Overall Length (in)	Shank Diameter (in)	Price
BU533200.5003	BU539300.5003	4-40 NC	2.205	0.141	
BU533200.5004	BU539300.5004	5-40 NC	2.205	0.141	
BU533200.5005	BU539300.5005	6-32 NC	2.205	0.141	
BU533200.5006	BU539300.5006	8-32 NC	2.480	0.168	
BU533200.5007	BU539300.5007	10-24 NC	2.756	0.194	
BU533200.5008	BU539300.5008	12-24 NC	3.150	0.220	
BU533200.5009	BU539300.5009	1/4-20 NC	3.150	0.255	



Cont'd next page...

Spiral Flute Taps

Ne2 Coated	TiCN Coated	Size	Overall Length (in)	Shank Diameter (in)	Price
BU533200.5010	BU539300.5010	5/16-18 MC	3.543	0.318	
BU533200.5011	BU539300.5011	3/8-16 NC	3.937	0.381	
CU533200.5012	CU539300.5012	7/16-14 NC	3.937	0.323	
CU533200.5013	CU539300.5013	1/2-13 NC	3.937	0.367	
CU533200.5014	CU539300.5014	9/16-12 NC	3.937	0.429	
CU533200.5015	CU539300.5015	5/8-11 NC	3.937	0.480	
CU533200.5016	CU539300.5016	3/4-10 NC	4.33	0.590	
CU533200.5017	CU539300.5017	7/8-9 NC	4.921	0.697	
CU533200.5018	CU539300.5018	1"-8 NC	5.512	0.800	
BU533200.5037	BU539300.5037	4-48 NF	2.205	0.141	
BU533200.5038	BU539300.5038	5-44 NF	2.205	0.141	
BU533200.5039	BU539300.5039	6-40 NF	2.205	0.141	
BU533200.5040	BU539300.5040	8-36 NF	2.48	0.168	
BU533200.5041	BU539300.5041	10-32 NF	2.756	0.194	
BU533200.5042	BU539300.5042	12-28 NF	3.15	0.220	
BU533200.5043	BU539300.5043	1/4-28 NF	3.15	0.255	
BU533200.5044	BU539300.5044	5/16-24 NF	3.543	0.318	
BU533200.5045	BU539300.5045	3/8-24 NF	3.937	0.381	
CU533200.5046	CU539300.5046	7/16-20 NF	3.937	0.323	
CU533200.5047	CU539300.5047	1/2-20 NF	3.937	0.367	
CU533200.5048	CU539300.5048	9/16-18 NF	3.937	0.429	
CU533200.5049	CU539300.5049	5/8-18 NF	3.937	0.480	
CU533200.5050	CU539300.5050	3/4-16 NF	4.33	0.590	
CU533200.5051	CU539300.5051	7/8-14 NF	4.921	0.697	
CU533200.5052	CU539300.5052	1"-12 NF	5.512	0.800	



Spiral Flute Taps Metric

Ne2 Coated	TiCN Coated	Size	Overall Length (mm)	Shank Diameter (in)	Price
BU533200.0040	BU539300.0040	M 4x0.7	63	0.168	
BU533200.0050	BU539300.0050	M 5x0.8	70	0.194	
BU533200.0060	BU539300.0060	M 6x1.0	80	0.255	
BU533200.0080	BU539300.0080	M 8x1.25	90	0.318	
BU533200.0100	BU539300.0100	M 10x1.5	100	0.381	
CU533200.0112	CU539300.0112	M 12x1.75	110	0.367	
CU533200.0116	CU539300.0116	M 16x2.0	110	0.48	
CU533200.0118	CU539300.0118	M 18x2.5	125	0.542	
CU533200.0120	CU539300.0120	M 20x2.5	140	0.652	
CU533200.0124	CU539300.0124	M 24x3.0	160	0.76	
Ne2 Coated	TiCN Coated	Size	Overall Length (mm)	Shank Diameter (mm)	Price
B4933200.0040	B4939300.0040	M 4x0.7	63	4.5	
B4933200.0050	B4939300.0050	M 5x0.8	70	6.0	



Cont'd next page...



Spiral Flute Taps Metric					
Ne2 Coated	TiCN Coated	Size	Overall Length (mm)	Shank Diameter (mm)	Price
B4933200.0060	B4939300.0060	M 6x1.0	80	6.0	
B4933200.0080	B4939300.0080	M 8x1.25	90	8.0	
B4933200.0100	B4939300.0100	M 10x1.5	100	10.0	
C4933200.0112	C4939300.0112	M 12x1.75	110	9.0	
C4933200.0116	C4939300.0116	M 16x2.0	110	12.0	
C4933200.0118	C4939300.0118	M 18x2.5	125	14.0	
C4933200.0120	C4939300.0120	M 20x2.5	140	16.0	
C4933200.0124	C4939300.0124	M 24x3.0	160	18.0	

Extended Length Spiral Point Taps Inch & Metric

Ne2 Coated	Size	Overall Length (in)	Shank Diameter (in)	Price
BU797300.5005	6-32 NC	4.409	0.141	
BU797300.5006	8-32 NC	4.921	0.168	
BU797300.5007	10-24 NC	5.512	0.194	
BU797300.5009	1/4-20 NC	6.299	0.255	
BU797300.5010	5/16-18 NC	7.087	0.318	
BU797300.5011	3/8-16 NC	7.874	0.381	
CU797300.5012	7/16-14 NC	7.874	0.323	
CU797300.5013	1/2-13 NC	8.819	0.367	
CU797300.5015	5/8-11 NC	8.819	0.480	
BU797300.5039	6-40 NF	4.409	0.141	
BU797300.5040	8-36 NF	4.921	0.168	
BU797300.5041	10-32 NF	5.512	0.194	
BU797300.5043	1/4-28 NF	6.299	0.255	
BU797300.5044	5/16-24 NF	7.087	0.318	
BU797300.5045	3/8-24 NF	7.087	0.381	
CU797300.5046	7/16-20 NF	7.874	0.323	
CU797300.5047	1/2-20 NF	7.874	0.367	
CU797300.5049	5/8-18 NF	7.874	0.480	



Ne2 Coated	Size	Overall Length (mm)	Shank Diameter (mm)	Price
B1667300.0030	M 3x0.5	100	3.5	
B1667300.0040	M 4x0.7	125	4.5	
B1667300.0050	M 5x0.8	140	6.0	
B1667300.0060	M 6x1.0	160	6.0	
B1667300.0080	M 8x1.25	180	8.0	
C1667300.0100	M 10x1.5	200	7.0	
C1667300.0112	M 12x1.75	224	9.0	
C1667300.0114	M 14x2.0	224	11.0	
C1667300.0116	M 16x2.0	224	12.0	
C1667300.0118	M 18x2.5	250	14.0	
C1667300.0120	M 20x2.5	280	16.0	

Extended Length Spiral Flute Taps Inch & Metric

Ne2 Coated	Size	Overall Length (in)	Shank Diameter (in)	Price
BU783200.5005	6-32 NC	4.409	0.141	
BU783200.5006	8-32 NC	4.921	0.168	
BU783200.5007	10-24 NC	5.512	0.194	
BU783200.5009	1/4-20 NC	6.299	0.255	
BU783200.5010	5/16-18 NC	7.087	0.318	
BU783200.5011	3/8-16 NC	7.874	0.381	
CU783200.5012	7/16-14 NC	7.874	0.323	
CU783200.5013	1/2-13 NC	8.819	0.367	
CU783200.5015	5/8-11 NC	8.819	0.480	
BU783200.5039	6-40 NF	4.409	0.141	
BU783200.5040	8-36 NF	4.921	0.168	
BU783200.5041	10-32 NF	5.512	0.194	
BU783200.5043	1/4-28 NF	6.299	0.255	
BU783200.5044	5/16-24 NF	7.087	0.318	
BU783200.5045	3/8-24 NF	7.087	0.381	
CU783200.5046	7/16-20 NF	7.874	0.323	
CU783200.5047	1/2-20 NF	7.874	0.367	
CU783200.5049	5/8-18 NF	7.874	0.480	



Ne2 Coated	Size	Overall Length (mm)	Shank Diameter (mm)	Price
B5863200.0030	M 3x0.5	100	3.5	
B5863200.0040	M 4x0.7	125	4.5	
B5863200.0050	M 5x0.8	140	6.0	
B5863200.0060	M 6x1.0	160	6.0	
B5863200.0080	M 8x1.25	180	8.0	
C5863200.0100	M 10x1.5	200	7.0	
C5863200.0100	M 12x1.75	224	9.0	
C5863200.0112	M 14x2.0	224	11.0	
C5863200.0114	M 16x2.0	224	12.0	
C5863200.0118	M 18x2.5	250	14.0	
C5863200.0120	M 20x2.5	280	16.0	



Multi Taps

ER Collet Chuck CAT/BT

Type	EDP	Description	L	D	Collet Series	Price
CAT (Short)	BK020SHT	CAT40-ER32-SHORT	1.063	-	ER32	
	BL020SHT	CAT50-ER32-SHORT	1.063	-	ER32	
CAT (Stub)	BK232B	CAT40AD/B-ER20-2.55	2.55	1.26	ER20	
	BK233B	CAT40AD/B-ER25-2.55	2.50	1.65	ER25	
	BK234B	CAT40AD/B-ER32-2.70	2.70	1.88	ER32	
CAT (Standard)	BK030B	CAT40AD/B-ER11-3.00	3.00	0.63	ER11	
	BK031B	CAT40AD/B-ER16-3.00	3.00	1.08	ER16	
	BK032B	CAT40AD/B-ER20-4.00	4.00	1.26	ER20	
	BK133B	CAT40AD/B-ER25-4.00	4.00	1.65	ER25	
	BK134B	CAT40AD/B-ER32-4.00	4.00	1.88	ER32	
	BL031B	CAT50AD/B-ER16-4.00	4.00	1.08	ER16	
	BL033B	CAT50AD/B-ER25-4.00	4.00	1.65	ER25	
	BL034B	CAT50AD/B-ER32-4.00	4.00	1.88	ER32	
CAT (Extended)	BK331B	CAT40AD/B-ER16-6.00	6.00	1.08	ER16	
	BK332B	CAT40AD/B-ER20-6.00	6.00	1.26	ER20	
	BK333B	CAT40AD/B-ER25-6.00	6.00	1.65	ER25	
	BK334B	CAT40AD/B-ER32-6.00	6.00	1.88	ER32	
	BL334B	CAT50AD/B-ER32-6.00	6.00	1.88	ER32	
BT (Stub)	BH232B	BT40AD/B-ER20-2.20	2.20	1.26	ER20	
	BH233B	BT40AD/B-ER25-2.50	2.50	1.65	ER25	
	BH234B	BT40AD/B-ER32-2.40	2.40	1.88	ER32	
BT (Standard)	BH031B	BT40AD/B-ER16-3.00	3.00	1.08	ER16	
	BH133B	BT40AD/B-ER25-4.00	4.00	1.65	ER25	
	BH134B	BT40AD/B-ER32-4.00	4.00	1.88	ER32	



Endmill Holders CAT

Type	EDP	Description	d1	L	D1	Price
Standard (CAT)	AK000B	CAT40AD/B-EMH 1/8-2.50	1/8	2.50	0.69	
	AK001B	CAT40AD/B-EMH 3/16-2.50	3/16	2.50	0.69	
	AK002B	CAT40AD/B-EMH 1/4-2.50	1/4	2.50	0.78	
	AK003B	CAT40AD/B-EMH 5/16-2.50	5/16	2.50	0.88	
	AK004B	CAT40AD/B-EMH 3/8-2.50	3/8	2.50	1	
	AK005B	CAT40AD/B-EMH 7/16-2.50	7/16	2.50	1.13	
	AK006B	CAT40AD/B-EMH 1/2-2.63	1/2	2.63	1.25	
	AK008B	CAT40AD/B-EMH 5/8-3.75	5/8	3.75	1.5	
	AK010B	CAT40AD/B-EMH 3/4-3.75	3/4	3.75	1.75	
	AK014B	CAT40AD/B-EMH 1-4.00	1	4.00	2	
	AK017B	CAT40AD/B-EMH 1-1/4-4.25	1-1/4	4.25	2.5	
	AK104B	CAT40AD/B-EMH 3/8-4.50	3/8	4.50	1.00	
	AK106B	CAT40AD/B-EMH 1/2-4.63	1/2	4.63	1.25	
	AK108B	CAT40AD/B-EMH 5/8-5.75	5/8	5.75	1.50	
	AK110B	CAT40AD/B-EMH 3/4-5.75	3/4	5.00	1.75	



Cont'd next page...

Endmill Holders CAT/BT

Type	EDP	Description	d1	L	D1	Price
Standard (CAT)	AK112B	CAT40AD/B-EMH 7/8-6.00	7/8	6.00	1.88	
	AK114B	CAT40AD/B-EMH 1-6.00	1	6.25	2.00	
	AL002B	CAT50AD/B-EMH 1/4-2.50	1/4	2.50	0.69	
	AL003B	CAT50AD/B-EMH 5/16-2.50	5/16	2.50	0.69	
	AL004B	CAT50AD/B-EMH 3/8-2.50	3/8	2.50	0.78	
	AL005B	CAT50AD/B-EMH 7/16-2.63	7/16	2.50	1.13	
	AL006B	CAT50AD/B-EMH 1/2-2.63	1/2	2.63	1.25	
	AL008B	CAT50AD/B-EMH 5/8-3.75	5/8	3.75	1.50	
	AL010B	CAT50AD/B-EMH 3/4-3.75	3/4	3.75	1.75	
	AL012B	CAT50AD/B-EMH 7/8-3.75	7/8	4.00	1.88	
	AL014B	CAT50AD/B-EMH 1-4.00	1	4.00	2.00	
AL017B	CAT50AD/B-EMH 1-1/4-4.00	1-1/4	4.25	2.50		
Extended (CAT)	AL104B	CAT50AD/B-EMH 3/8-4.50	3/8	4.50	1.00	
	AL106B	CAT50AD/B-EMH 1/2-4.63	1/2	4.63	1.25	
	AL108B	CAT50AD/B-EMH 5/8-5.75	5/8	5.75	1.50	
	AL110B	CAT50AD/B-EMH 3/4-5.75	3/4	6.00	1.75	
	AL112B	CAT50AD/B-EMH 7/8-5.75	1	6.25	2.00	
Standard (BT)	AH000B	BT40AD/B-EMH 1/8-2.50	1/8	2.50	0.69	
	AH001B	BT40AD/B-EMH 3/16-2.50	3/16	2.50	0.69	
	AH002B	BT40AD/B-EMH 1/4-2.50	1/4	2.50	0.78	
	AH003B	BT40AD/B-EMH 5/16-2.50	5/16	2.50	0.88	
	AH004B	BT40AD/B-EMH 3/8-2.50	3/8	2.50	1.00	
	AH005B	BT40AD/B-EMH 7/16-2.50	7/16	2.50	1.13	
	AH006B	BT40AD/B-EMH 1/2-2.50	1/2	2.50	1.25	
	AH008B	BT40AD/B-EMH 5/8-2.50	5/8	2.50	1.50	
	AH010B	BT40AD/B-EMH 3/4-2.50	3/4	2.50	1.75	


Shell Mill Arbor

Type	EDP	Description	L	D	Price
Shell Mill Arbor (Standard)	EK010B	CAT40 AD/B-SMA 3/4-1.50	1.5	1.69	
	EK014B	CAT40 AD/B-SMA 1-2.00	2.00	2.19	
	EK017B	CAT40 D/B-SMA 1 1/4-2.00	2.00	2.75	
	EL010B	CAT50 AD/B-SMA 3/4-1.50	1.50	1.69	
	EL014B	CAT50 AD/B-SMA 1-2.00	2.00	2.19	
	EL017B	CAT50 AD/B-SMA 1 1/4-2.00	2.50	2.75	
Shell Mill Arbor (Extended)	EK310B	CAT40 AD/B-SMA 3/4-3.50	3.50	1.69	
	EK314B	CAT AD/B-SMA 1-4.00	4.00	2.19	
	EK317B	CAT40 AD/B-SMA 1 1/4-4.00	4.00	2.75	
	EL310B	CAT50 AD/B-SMA 3/4-3.50	3.50	1.69	
	EL314B	CAT50 AD/B-SMA 1-4.00	4.00	2.19	
	EL317B	CAT50 AD/B-SMA 1 1/4-4.00	4.00	2.75	



Cont'd next page...



Shell Mill Arbor					
Type	EDP	Description	L	D	Price
Shell Mill Arbor (Standard)	EH010B	BT40 AD/B-SMA 3/4-1.77	1.77	1.69	
	EH014B	BT40 AD/B-SMA 1-1.77	1.77	2.19	
	EH017B	BT40 AD/B-SMA 1 1/4-1.81	1.81	2.75	
Shell Mill Arbor (Extended)	EH314B	BT40 AD/B-SMA 1-4.13	4.13	2.19	
	EH317B	BT40 AD/B-SMA 1/4-4.13	4.13	2.75	

Shrink Fit Holder						
Type	EDP	Description	d1	L	D1	Price
Standard (CAT)	VK020	CAT40AD/B-SFH1/8-3.15	1/8	3.15	0.394	
	VK022	CAT40AD/B-SFH3/16-3.15	3/16	3.15	0.394	
	VK024	CAT40AD/B-SFH1/4-3.15	1/4	3.15	0.827	
	VK026	CAT40AD/B-SFH1/4-6.30	1/4	6.3	0.827	
	VK028	CAT40AD/B-SFH3/8-3.15	3/8	3.15	0.945	
	VK030	CAT40AD/B-SFH3/8-6.30	3/8	6.3	0.945	
	VK032	CAT40AD/B-SFH1/2-3.15	1/2	3.15	0.945	
	VK034	CAT40AD/B-SFH1/2-6.30	1/2	6.3	0.945	
	VK036	CAT40AD/B-SFH5/8-3.15	5/8	3.15	1.063	
VK038	CAT40AD/B-SFH5/8-6.30	5/8	6.30	1.063		

Shank Type						
Insert	Dia	Designation	Overall Length	Reach	Z	Price
JOMW06T215ZZSR	5/8	AJXU06R102FA10S	3.75	1.25	2	
JOMW080320ZZSR	3/4	AJX08R122WA12S	4.75	2	2	
JOMW080320ZZSR	3/4	AJXU08R12SA12L	7	4	2	
WDNWO9T320	1	AJXU09R162WA16S	5.625	2.375	2	
WDNWO9T320	1	AJXU09R162SA16L	8	4.75	2	
WDNW120420	1-1/4	AJXU12R202SA20L	8	4.75	3	
WDNW120420	1-1/4	AJXU12R243WA20M	8	2.375	4	

Arbor Type					
Insert	Dia	Designation	Bore	Z	Price
WDNW120420	2	AJXU12R0204	3/4	4	

Inserts	
Insert	Price
JOMW06T215ZZSR	
JOMW080320ZZSR	
WDNWO9T320	
WDNW120420	
WDNW140520	

Ultra Precision ER Collets - Inch

Size	ER11	ER16	ER20	ER25	ER32	Price
1/32	-	-	ER20-132	-	-	
1/16	ER11-1/16	ER16-116	ER20-116	ER25-116	-	
3/32	ER11-3/32	ER16-332	ER20-332	ER25-332	ER32-332	
1/8	ER11-1/8	ER16-18	ER20-18	ER25-18	ER32-18	
5/32	ER11-5/32	ER16-532	ER20-532	ER25-532	ER32-532	
3/16	ER11-3/16	ER16-316	ER20-316	ER25-316	ER32-316	
7/32	ER11-7/32	ER16-732	ER20-732	ER25-732	ER32-732	
1/4	ER11-1/4	ER16-1/4	ER20-14	ER25-14	ER32-14	
9/32	-	-	ER20-932	ER25-932	ER32-932	
5/16	-	ER16-516	ER20-516	ER25-516	ER32-516	
11/32	-	ER16-1132	ER20-1132	ER25-1132	ER32-1132	
3/8	-	-	ER20-38	ER25-38	ER32-38	
13/32	-	-	ER20-13/32	ER25-1332	ER32-1332	
7/16	-	-	ER20-716	ER25-716	ER32-716	
1/2	-	-	ER20-12	ER25-12	ER32-12	
15/32	-	-	ER20-1532	ER25-1532	ER32-1532	
17/32	-	-	-	ER25-1732	ER32-1732	
9/16	-	-	-	ER25-916	ER32-916	
19/32	-	-	-	ER25-1932	ER32-1932	
5/8	-	-	-	ER25-58	-	
21/32	-	-	-	-	-	
11/16	-	-	-	-	-	
23/32	-	-	-	-	-	
3/4	-	-	-	-	-	



Ultra Precision ER Collets - Metric

Size	ER11	ER16	ER20	ER25	ER32	Price
1	ER11-1MM	-	-	-	-	
2	ER11-2MM	ER16-2MM	-	-	-	
3	ER11-3MM	ER16-3MM	ER20-3MM	ER25-3MM	ER32-3MM	
4	ER11-4MM	ER16-4MM	ER20-4MM	ER25-4MM	ER32-4MM	
5	ER11-5MM	ER16-5MM	ER20-5MM	ER25-5MM	ER32-5MM	
6	ER11-6MM	ER16-6MM	ER20-6MM	ER25-6MM	ER32-6MM	
7	-	ER16-7MM	ER20-7MM	ER25-7MM	ER32-7MM	
8	-	ER16-8MM	ER20-8MM	ER25-8MM	ER32-8MM	
9	-	-	-	ER25-9MM	ER32-9MM	
10	-	ER16-10MM	ER20-10MM	ER25-10MM	ER32-10MM	
11	-	-	-	ER25-11MM	-	
12	-	-	ER20-12MM	ER25-12MM	ER32-12MM	
13	-	-	-	-	ER32-13MM	
18	-	-	-	-	ER32-18MM	
20	-	-	-	-	ER32-20MM	





ER Collet Chuck Sraight Shank					
EDP	Shank Diameter	Overall Length	Head Diameter	ER Size	Price
SCC58ER11M-150	5/8	150	16	ER11	
SCC58ER16M-150	5/8	150	22	ER16	
SCC58ER20M-150	5/8	150	28	ER20	
SCC34ER16M-150	3/4	150	22	ER16	
SCC34ER16M-180	3/4	180	22	ER16	
SCC34ER20M-150	3/4	150	28	ER20	
SCC34ER20M-180	3/4	180	28	ER20	
SCC34ER25M-150	3/4	150	35	ER25	
SCC34ER25M-180	3/4	180	35	ER25	
SCC1ER25M-150	1	150	35	ER25	
SCC1ER25M-180	1	180	35	ER25	
SCC1ER32M-150	1	150	44	ER32	
SCC1ER32M-180	1	180	44	ER32	



Ultra Precision			Standard Precision		
Size	Set	Price	Size	Set	Price
ER16	10 Pcs		ER16	10 Pcs	\$103.50
ER20	12 Pcs		ER20	12 Pcs	\$145.00
ER25	15 Pcs		ER25	15 Pcs	\$151.50
ER32	18 Pcs		ER32	18 Pcs	\$187.50



Nuts	
Size	Price
ER16-TI	
ER20-TI	
ER25-TI	
ER32-TI	

SG-ESS Drills Stub Length

EDP	Size	Decimal	Wire/Fractional Equivalent	Flute Length	Overall Length	Shank Diameter	Price
0573780	1.00	0.0394		6	38	3	
0693879	1.02	0.0402	#60	6	38	3	
0693891	1.04	0.0409	#59	6	38	3	
0693913	1.07	0.0421	#58	7	39	3	
0693936	1.09	0.0429	#57	7	39	3	
0694009	1.18	0.0465	#56	7	39	3	
0694015	1.19	0.0469	3/64	8	40	3	
0694118	1.32	0.0520	#55	9	41	3	
0573831	1.50	0.0591		9	41	3	
0694262	1.51	0.0594	#53	10	42	3	
0694336	1.59	0.0626	1/16	10	42	3	
0694342	1.61	0.0634	#52	10	42	3	
0694480	1.78	0.0701	#50	11	43	3	
0694525	1.83	0.0720	#49	11	43	3	
0694605	1.93	0.0760	#48	12	44	3	
0694640	1.98	0.0780	5/64	12	44	3	
0694657	1.99	0.0783	#47	12	44	3	
0572514	2.00	0.0787		12	44	3	
0694708	2.06	0.0811	#46	12	44	3	
1363043	2.08	0.0820	#45	3/4	2	1/8	
0572520	2.10	0.0827		12	44	3	
1363050	2.18	0.0860	#44	3/4	2	1/8	
0572537	2.20	0.0866		13	45	3	
1363066	2.26	0.0890	#43	3/4	2	1/8	
0572543	2.30	0.0906		13	45	3	
1363072	2.37	0.0935	#42	3/4	2	1/8	
1245365	2.38	0.0938	3/32	1/2	1-3/4	1/8	
0572550	2.40	0.0949		14	46	3	
1363089	2.44	0.0960	#41	4/5	2-1/16	1/8	
1280931	2.49	0.0980	#40	4/5	2-1/4	1/8	
0572566	2.50	0.0984		14	46	3	
1363095	2.53	0.0995	#39	13/16	2-1/4	1/8	
1363100	2.58	0.1015	#38	13/16	2-1/4	1/8	
0572572	2.60	0.1024		14	46	3	
1363117	2.64	0.1040	#37	13/16	2-1/4	1/8	
0572589	2.70	0.1063		16	48	3	
1245823	2.71	0.1065	#36	13/16	2-1/4	1/8	
1245371	2.78	0.1094	7/64	5/8	1-7/8	1/8	
0572595	2.80	0.1102		16	48	3	
1363130	2.82	0.1110	#34	7/8	2-5/16	1/8	
1363146	2.87	0.1130	#33	7/8	2-5/16	1/8	
0572600	2.90	0.1142		16	48	3	
0572617	3.00	0.1181		16	48	3	



Drills

Cont'd next page...

SG-ESS Drills Stub Length

EDP	Size	Decimal	Wire/Fractional Equivalent	Flute Length	Overall Length	Shank Diameter	Price
0572623	3.10	0.1220		18	50	4	
1245388	3.18	0.1250	1/8	3/4	2	1/8	
0572630	3.20	0.1260		18	50	4	
1289836	3.26	0.1285	#30	15/16	2-3/8	3/16	
0572646	3.30	0.1299		18	50	4	
0572652	3.40	0.1343		20	52	4	
1245817	3.46	0.1365	#29	15/16	2-3/8	3/16	
0572669	3.50	0.1378		20	52	4	
1363169	3.57	0.1405	#28	15/16	2-3/8	3/16	
1245394	3.57	0.1406	9/64	13/16	2-1/8	3/16	
0572675	3.60	0.1417		20	52	4	
1363175	3.66	0.1440	#27	1	2-7/16	3/16	
0572681	3.70	0.1457		20	52	4	
1363181	3.73	0.1470	#26	1	2-7/16	3/16	
1245800	3.80	0.1495	#25	1	2-7/16	3/16	
0572698	3.80	0.1496		22	54	4	
1363198	3.86	0.1520	#24	1	2-7/16	3/16	
0572703	3.90	0.1535		22	54	4	
1363203	3.91	0.1540	#23	1	2-7/16	3/16	
1245400	3.97	0.1563	5/32	13/16	2-1/8	3/16	
1363210	3.99	0.1570	#22	1-1/16	2-7/16	3/16	
0572710	4.00	0.1575		22	54	4	
1245795	4.04	0.1590	#21	1-1/16	2-7/16	3/16	
1363226	4.09	0.1610	#20	1-1/16	2-7/16	3/16	
0572726	4.10	0.1614		22	66	6	
0572732	4.20	0.1654		22	66	6	
1363232	4.22	0.1660	#19	1-1/16	2-7/16	3/16	
0572749	4.30	0.1693		23	68	6	
1245416	4.37	0.1719	11/64	1	2-3/8	3/16	
0572755	4.40	0.1732		24	68	6	
0572761	4.50	0.1772		24	68	6	
1363278	4.57	0.1800	#15	1-1/8	2-9/16	3/16	
0572778	4.60	0.1811		24	68	6	
1363284	4.62	0.1820	#14	1-1/8	2-9/16	3/16	
0572784	4.70	0.1850		24	68	6	
1245422	4.76	0.1875	3/16	1	2-3/8	3/16	
0572790	4.80	0.1890		26	70	6	
0572806	4.90	0.1929		26	70	6	
1363329	4.91	0.1935	#10	1-3/16	3	1/4	
1363335	4.98	0.1960	#9	1-3/16	3	1/4	
0572812	5.00	0.1969		26	70	6	
1280954	5.05	0.1990	#8	1-3/16	3	1/4	
0572829	5.10	0.2008		26	70	6	



Cont'd next page...

SG-ESS Drills Stub Length

EDP	Size	Decimal	Wire/Fractional Equivalent	Flute Length	Overall Length	Shank Diameter	Price
1245789	5.11	0.2010	#7	1-3/16	3	1/4	
1245439	5.16	0.2031	13/64	1-1/8	2-7/8	1/4	
1280960	5.18	0.2040	#6	1-1/4	3-1/16	1/4	
0572835	5.20	0.2047		26	70	6	
1363341	5.22	0.2055	#5	1-1/4	3-1/16	1/4	
0572841	5.30	0.2087		26	70	6	
1363358	5.31	0.2090	#4	1-1/4	3-1/16	1/4	
0572858	5.40	0.2126		28	72	6	
1363364	5.41	0.2130	#3	1-1/4	3-1/16	1/4	
0572864	5.50	0.2165		28	72	6	
1245445	5.56	0.2188	7/32	1-1/8	2-7/8	1/4	
0572870	5.60	0.2205		28	72	6	
1363370	5.61	0.2210	#2	1-5/16	3-1/8	1/4	
0572887	5.70	0.2244		28	72	6	
1363387	5.79	0.2280	#1	1-5/16	3-1/8	1/4	
0572893	5.80	0.2283		28	72	6	
0572909	5.90	0.2223		28	72	6	
1245451	5.95	0.2344	15/64	1-1/4	3	1/4	
0572915	6.00	0.2362		28	72	6	
1363409	6.05	0.2380	B	1-3/8	3-3/16	1/4	
0572921	6.10	0.2402		31	75	8	
1363415	6.15	0.2420	C	1-3/8	3-3/16	1/4	
0572938	6.20	0.2441		31	75	8	
1363415	6.25	0.2460	D	1-3/8	3-3/16	1/4	
0572944	6.30	0.2480		31	75	8	
1245468	6.35	0.2500	1/4	1-1/4	3	1/4	
0572950	6.40	0.2520		31	75	8	
0572967	6.50	0.2559		31	75	8	
1245830	6.53	0.2570	F	1-7/16	3-1/4	3/8	
0572973	6.60	0.2598		31	75	8	
1363444	6.63	0.2610	G	1-7/16	3-1/4	3/8	
0572980	6.70	0.2628		31	75	8	
1245474	6.75	0.2656	17/64	1-3/8	3-3/8	3/8	
0572996	6.80	0.2677		34	78	8	
0573000	6.90	0.2717		34	78	8	
1363450	6.91	0.2720	I	1-1/2	3-5/16	3/8	
0573017	7.00	0.2756		34	78	8	
1363467	7.04	0.2770	J	1-3/8	3-3/16	3/8	
0573023	7.10	0.2795		34	78	8	
1245480	7.14	0.2813	9/32	1-3/8	3-3/16	3/8	
0573030	7.20	0.2835		34	78	8	
0573046	7.30	0.2874		34	78	8	
1363473	7.37	0.2900	L	1-9/16	3-3/8	3/8	



Cont'd next page...

SG-ESS Drills Stub Length

EDP	Size	Decimal	Wire/Fractional Equivalent	Flute Length	Overall Length	Shank Diameter	Price
0573052	7.40	0.2913		34	78	8	
1363480	7.49	0.2950	M	1-9/16	3-3/8	3/8	
0573069	7.50	0.2953		34	78	8	
1245497	7.54	0.2969	19/64	1-3/8	3-3/16	3/8	
0573075	7.60	0.2992		37	81	8	
1363496	7.67	0.3020	N	1-5/8	3-7/16	3/8	
0573081	7.70	0.3031		37	81	8	
0573098	7.80	0.3071		37	81	8	
0573103	7.90	0.3125		37	81	8	
1245502	7.94	0.3125	5/16	1-1/2	3-3/8	3/8	
0573110	8.00	0.3150		37	81	8	
1363501	8.03	0.3160	O	1-11/16	3-1/2	3/8	
0573126	8.10	0.3189		37	87	10	
0573132	8.20	0.3228		37	87	10	
0573149	8.30	0.3268		37	87	10	
1245519	8.33	0.3281	21/64	1-1/2	3-3/8	3/8	
0573155	8.40	0.3307		37	87	10	
1363524	8.43	0.3320	Q	1-11/16	3-1/2	3/8	
0573161	8.50	0.3346		37	87	10	
0573178	8.60	0.3346		37	87	10	
1363530	8.61	0.3390	R	1-11/16	3-1/2	3/8	
0573184	8.70	0.3425		40	90	10	
1245525	8.73	0.3438	11/32	1-5/8	3-1/2	3/8	
0573190	8.80	0.3465		40	90	10	
0573206	8.90	0.3504		40	90	10	
0573212	9.00	0.3543		40	90	10	
0573229	9.10	0.3583		40	90	10	
1245531	9.13	0.3594	23/64	1-5/8	3-1/2	3/8	
0573235	9.20	0.3622		40	90	10	
0573241	9.30	0.3661		40	90	10	
1280977	9.35	0.3680	U	1-13/16	3-5/8	3/8	
0573258	9.40	0.3701		40	90	10	
0573264	9.50	0.3750		40	90	10	
1245548	9.53	0.3750	3/8	1-5/8	3-1/2	3/8	
1363560	9.58	0.3770	V	1-7/8	3-31/32	1/2	
0573270	9.60	0.3780		43	93	10	
0573287	9.70	0.3819		43	93	10	
0573293	9.80	0.3858		43	93	10	
0573309	9.90	0.3858		43	93	10	
1245554	9.92	0.3906	25/64	1-11/16	3-7/8	1/2	
0573315	10.00	0.3937		43	93	10	
0573321	10.10	0.3976	X	1-1/16	4-1/32	1/2	
0573338	10.20	0.4016		43	100	12	



Cont'd next page...

SG-ESS Drills Stub Length

EDP	Size	Decimal	Wire/Fractional Equivalent	Flute Length	Overall Length	Shank Diameter	Price
1363599	10.26	0.4040	Y	1-15/16	4-1/32	1/2	
0573344	10.30	0.4055		43	100	12	
1245560	10.32	0.4063	13/32	1-11/16	3-7/8	1/2	
0573350	10.40	0.4094		43	100	12	
1363604	10.49	0.4130	Z	2	4-3/32	1/2	
0573367	10.50	0.4134		43	100	12	
0573373	10.60	0.4173		43	100	12	
0573380	10.70	0.4213		47	104	12	
1245577	10.72	0.4219	27/64	1-7/8	4-1/8	1/2	
0573396	10.80	0.4252		47	104	12	
0573401	10.90	0.4291		47	104	12	
0573418	11.00	0.4331		47	104	12	
0573424	11.10	0.4370		47	104	12	
1245583	11.11	0.4375	7/16	1-7/8	4-1/8	1/2	
0573430	11.20	0.4409		47	104	12	
0573447	11.30	0.4449		47	104	12	
0573453	11.40	0.4488		47	104	12	
0573460	11.50	0.4528		47	104	12	
1245590	11.51	0.4531	29/64	1-7/8	4-1/8	1/2	
0573476	11.60	0.4567		47	104	12	
0573482	11.70	0.4606		47	104	12	
0573499	11.80	0.4646		47	104	12	
0573504	11.90	0.4685		51	108	12	
1245605	11.91	0.4688	15/32	2	4-1/4	1/2	
0573510	12.00	0.4724		51	108	12	
0573527	12.10	0.4764		51	108	12	
0573533	12.20	0.4803		51	108	12	
0573540	12.30	0.4843		51	108	12	
1245611	12.30	0.4844	31/64	2	4-1/4	1/2	
0573556	12.40	0.4882		51	108	12	
0573562	12.50	0.4921		51	108	12	
0573579	12.60	0.4961		51	108	12	
0573585	12.70	0.5000		51	108	12	
1245628	12.70	0.5000	1/2	2	4-1/4	1/2	
0573591	12.80	0.5039		51	108	12	
0573607	12.90	0.5079		51	108	12	
0573613	13.00	0.5118		51	108	12	
1280851	13.49	0.5313	17/32	2-7/8	5-3/16	5/8	
0573620	13.50	0.5315		72	132	16	
0573636	14.00	0.5512		72	132	16	
1280868	14.29	0.5625	9/16	3	5-3/8	1/2	
0573642	14.50	0.5709		76	136	16	
0573659	15.00	0.5906		76	142	20	



Cont'd next page...

SG-ESS Drills Stub Length

EDP	Size	Decimal	Wire/Fractional Equivalent	Flute Length	Overall Length	Shank Diameter	Price
1280874	15.08	0.5938	19/32	3	5-5/8	3/4	
0573665	15.50	0.6102		80	146	20	
1280880	15.88	0.6250	5/8	3-3/16	5-3/4	3/4	
0573671	16.00	0.6299		80	146	20	
0573688	16.50	0.6496		84	150	20	
1280897	16.67	0.6563	21/32	3-3/8	5-15/16	3/4	
0573694	17.00	0.6693		84	150	20	
1280902	17.46	0.6875	11/16	3-7/16	6	3/4	
0573700	17.50	0.6890		87	153	20	
0573716	18.00	0.7087		87	153	20	
1280919	18.26	0.7188	23/32	3-7/16	6	7/8	
0573722	18.50	0.7283		90	156	20	
0573739	19.00	0.7480		90	164	25	
1280925	19.05	0.7500	3/4	3-9/16	6-1/2	7/8	
0573745	19.50	0.7677		94	168	25	
0573751	20.00	0.7874		94	168	25	



Straight Shank jobber Length

EDP	Size			Flute Length	Overall Length	Shank Diameter	Price
	Fractional	Wire	Letter				
0011097		#60		0.0400	11/16	1 5/8	
0011102		#59		0.0410	11/16	1 5/8	
0011119		#58		0.0420	11/16	1 5/8	
0011125		#57		0.0430	3/4	1 3/4	
0011131		#56		0.0465	3/4	1 3/4	
0011148	3/64			0.0469	3/4	1 3/4	
0011154		#55		0.0520	7/8	1 7/8	
0011160		#54		0.0550	7/8	1 7/8	
0011177		#53		0.0595	7/8	1 7/8	
0011183	1/16	#52		0.0625	7/8	1 7/8	
0011190		#52		0.0635	7/8	1 7/8	
0011205		#51		0.0670	1	2	
0011211		#50		0.0700	1	2	
0011228		#49		0.0730	1	2	
0011234		#48		0.0760	1	2	
0011240	5/64			0.0781	1	2	
0011257		#47		0.0785	1	2	
0011263		#46		0.0810	1 1/8	2 1/8	
0011270		#45		0.0820	1 1/8	2 1/8	
0011286		#44		0.0860	1 1/8	2 1/8	
0011292		#43		0.0890	1 1/4	2 1/4	
0011308		#42		0.0935	1 1/4	2 1/4	
0011314	3/32			0.0938	1 1/4	2 1/4	



Cont'd next page...

Straight Shank Lobber Length

EDP	Size			Flute Length	Overall Length	Shank Diameter	Price
	Fractional	Wire	Letter				
0011320		#41		0.0960	1 3/8	2 3/8	
0590530		#40		0.0980	1 3/8	2 3/8	
0011343		#39		0.0995	1 3/8	2 3/8	
0011350		#38		0.1015	1 7/16	2 1/2	
0011366		#37		0.1040	1 7/16	2 1/2	
0011372		#36		0.1065	1 7/16	2 1/2	
0011389	7/64			0.1094	1 1/2	2 5/8	
0011395		#35		0.1100	1 1/2	2 5/8	
0011400		#34		0.1110	1 1/2	2 5/8	
0011417		#33		0.1130	1 1/2	2 5/8	
0011423		#32		0.1160	1 5/8	2 3/4	
0011430		#31		0.1200	1 5/8	2 3/4	
0011446	1/8			0.1250	1 5/8	2 3/4	
0011452		#30		0.1285	1 5/8	2 3/4	
0011469		#29		0.1360	1 3/4	2 7/8	
0011475		#28		0.1405	1 3/4	2 7/8	
0011481	9/64			0.1406	1 3/4	2 7/8	
0011498		#27		0.1440	1 7/8	3	
0011503		#26		0.1470	1 7/8	3	
0011510		#25		0.1495	1 7/8	3	
0011526		#24		0.1520	2	3 1/8	
0011532		#23		0.1540	2	3 1/8	
0011549	5/32			0.1563	2	3 1/8	
0011555		#22		0.1570	2	3 1/8	
0011561		#21		0.1590	2 1/8	3 1/4	
0011578		#20		0.1610	2 1/8	3 1/4	
0011584		#19		0.1660	2 1/8	3 1/4	
0011590		#18		0.1695	2 1/8	3 1/4	
0011606	11/64			0.1719	2 1/8	3 1/4	
0011629		#17		0.1730	2 3/16	3 3/8	
0011612		#16		0.1770	2 3/16	3 3/8	
0011635		#15		0.1800	2 3/16	3 3/8	
0011641		#14		0.1820	2 3/16	3 3/8	
0011658		#13		0.1850	2 5/16	3 1/2	
0011664	3/16			0.1875	2 5/16	3 1/2	
0011670		#12		0.1890	2 5/16	3 1/2	
0011687		#11		0.1910	2 5/16	3 1/2	
0011693		#10		0.1935	2 7/16	3 5/8	
0011709		#9		0.1960	2 7/16	3 5/8	
0011715		#8		0.1990	2 7/16	3 5/8	
0011721		#7		0.2010	2 7/16	3 5/8	
0011738	13/64			0.2031	2 7/16	3 5/8	
0011744		#6		0.2040	2 1/2	3 3/4	



Drills

Cont'd next page...

Straight Shank Jobber Length							
EDP	Size			Flute Length	Overall Length	Shank Diameter	Price
	Fractional	Wire	Letter				
0011750		#5		0.2055	2 1/2	3 3/4	
0011767		#4		0.2090	2 1/2	3 3/4	
0011773		#3		0.2130	2 1/2	3 3/4	
0011780	7/32			0.2188	2 1/2	3 3/4	
0011796		#2		0.2210	2 5/8	3 7/8	
0011801		#1		0.2280	2 5/8	3 7/8	
0553836			A	0.2340	2 5/8	3 7/8	
0011818	15/64			0.2344	2 5/8	3 7/8	
0553842			B	0.2380	2 3/4	4	
0553859			C	0.2420	2 3/4	4	
0553865			D	0.2460	2 3/4	4	
0553871			E	0.2500	2 3/4	4	
0011824	1/4			0.2500	2 3/4	4	
0553888			F	0.2570	2 7/8	4 1/8	
0553894			G	0.2610	2 7/8	4 1/8	
0011830	17/64			0.2656	2 7/8	4 1/8	
0553900			H	0.2660	2 7/8	4 1/8	
0553916			I	0.2720	2 7/8	4 1/8	
0553922			J	0.2770	2 7/8	4 1/8	
0553939			K	0.2810	2 15/16	4 1/4	
0011847	9/32			0.2813	2 15/16	4 1/4	
0553945			L	0.2900	2 15/16	4 1/4	
0553951			M	0.2950	3 1/16	4 3/8	
0011853	19/64			0.2969	3 1/16	4 3/8	
0553968			N	0.3020	3 1/16	4 3/8	
0011860	5/16			0.3125	3 3/16	4 1/2	
0553974			O	0.3160	3 3/16	4 1/2	
0553980			P	0.3230	3 5/16	4 5/8	
0011876	21/64			0.3281	3 5/16	4 5/8	
0553997			Q	0.3320	3 7/16	4 3/4	
0554001			R	0.3390	3 7/16	4 3/4	
0011882	11/32			0.3438	3 7/16	4 3/4	
0554018			S	0.3480	3 1/2	4 7/8	
0554024			T	0.3580	3 1/2	4 7/8	
0011899	23/64			0.3594	3 1/2	4 7/8	
0554030			U	0.3680	3 5/8	5	
0011904	3/8			0.3750	3 5/8	5	
0554047			V	0.3770	3 5/8	5	
0554053			W	0.3860	3 3/4	5 1/8	
0011910	25/64			0.3906	3 3/4	5 1/8	
0554060			X	0.3970	3 3/4	5 1/8	
0554076			Y	0.4040	3 7/8	5 1/4	
0011927	13/32			0.4063	3 7/8	5 1/4	



Cont'd next page...

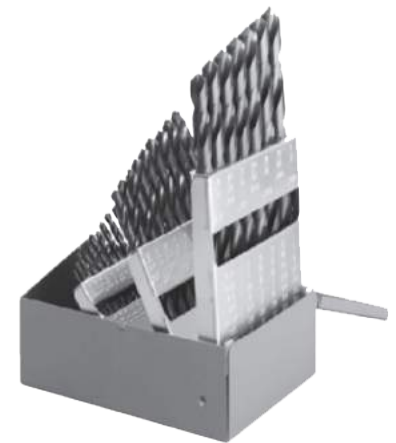
Straight Shank Jobber Length

EDP	Size			Flute Length	Overall Length	Shank Diameter	Price
	Fractional	Wire	Letter				
0554082			Z	0.4130	3 7/8	5 1/4	
0011933	27/64			0.4219	3 15/16	5 3/8	
0011940	7/16			0.4375	4 1/16	5 1/2	
0011956	29/64			0.4531	4 3/16	5 5/8	
0011962	15/32			0.4688	4 5/16	5 3/4	
0011979	31/64			0.4844	4 3/8	5 7/8	
0011985	1/2			0.5000	4 1/2	6	
1131669	33/64			0.5156	4 13/16	6 5/8	
1131675	17/32			0.5313	4 13/16	6 5/8	
1131698	9/16			0.5625	4 13/16	6 5/8	
1131703	37/64			0.5781	4 13/16	6 5/8	
1131710	19/32			0.5938	5 3/16	7 1/8	
1131726	39/64			0.6094	5 3/16	7 1/8	
1131732	5/8			0.6250	5 3/16	7 1/8	
1131749	41/64			0.6406	5 3/16	7 1/8	
1131755	21/32			0.6563	5 3/16	7 1/8	
1131761	43/64			0.6719	5 5/8	7 5/8	
1131778	11/16			0.6875	5 5/8	7 5/8	



Drill Set Jobber Length

EDP	High Speed Drill Sets	Set No.	Price
Fractional Sizes			
3599013	1/16" to 1/4" By 64ths	S13	
3599015	1/16" To 1/2" By 32nds	S15	
3599021	1/16" To 3/8" By 64ths	S21	
3599129	1/16" To 1/2" By 64ths	S29	
Wire Gauge Sizes			
3599060	No. 1 To No. 60	S60	
3599020	No. 61 To No. 80	S20	
Letter Sizes			
3599026	A To Z	S26	
Combination Sizes			
3599115	S29, S60, S26	S115	
EDP	Cobalt Drill Sets	Set No.	Price
Fractional Sizes			
3599029	1/16" To 1/2" By 64ths	C29	



Solid Carbide Thread Mill Inch & Metric

EDP	Size	Pitch	Cutter Diameter	Shank Diameter	Thread Length	Overall Length	No. of Flute	Price
TE160	#4	40	0.85	0.125	0.175	2.000	3	
TE240	#6	32	0.100	0.125	0.128	2.000	3	
TE280	#8	32	0.115	0.125	0.250	2.000	3	
TE340	#10	32	0.120	0.125	0.312	2.000	3	
TE420	1/4	28	0.180	0.187	0.500	2.500	3	
TE320	#10	24	0.120	0.125	0.312	2.000	3	
TE500	3/8	24	0.285	0.312	0.750	3.000	4	
TE400	1/4	20	0.180	0.187	0.500	2.500	3	
TE540	7/16	20	0.335	0.375	0.875	3.500	4	
TE580	1/2	20	0.370	0.375	1.000	3.500	4	
TE440	5/16	18	0.235	0.250	0.625	2.500	3	
TE620	9/16	18	0.370	0.375	0.875	3.500	4	
TE480	3/8	16	0.285	0.312	0.750	3.000	4	
TE720	3/4	16	0.490	0.500	1.250	3.500	4	
TE520	7/16	14	0.305	0.312	0.750	3.000	4	
TE760	7/8	14	0.490	0.500	1.250	3.500	4	
TE560	1/2	13	0.350	0.375	0.875	3.500	4	
TE600	9/16	12	0.370	0.375	0.875	3.500	4	
TE640	5/8	11	0.470	0.500	1.250	3.500	4	
TE700	3/4	10	0.495	0.500	1.250	3.500	4	
TE740	7/8	9	0.620	0.625	1.375	4.000	4	
TE780	1	8	0.620	0.625	1.375	4.000	4	
TD200	M3	0.50	0.085	0.125	0.178	2.000	3	
TD240	M4	0.70	0.115	0.125	0.276	2.000	3	
TD280	M5	0.80	0.120	0.125	0.312	2.000	3	
TD310	M6	1.00	0.170	0.187	0.500	2.500	3	
TD360	M8	1.25	0.235	0.250	0.625	2.500	3	
TD420	M10	1.50	0.300	0.312	0.750	3.000	4	
TD500	M12	1.75	0.360	0.375	0.875	3.500	4	
TD600	M16	2.00	0.470	0.500	1.250	3.500	4	
TD700	M20	2.50	0.495	0.500	1.250	3.500	4	
TD780	M24	3.00	0.620	0.625	1.375	4.000	4	



Solid Carbide Thread Mill For Taper Pipe

EDP	Size	Pitch	Large End Cutter Diameter	Shank Diameter	Thread Length	Overall Length	No. of Flute	Price
TF020	1/16 & 1/8 NPT	27	0.245	0.250	0.437	2.500	3	
TF400	1/4 & 3/8 NPT	18	0.305	0.312	0.625	3.000	4	
TF480	1/4 & 3/8 NPT	18	0.363	0.375	0.680	3.500	4	
TF560	1/2 & 3/4 NPT	14	0.495	0.500	0.875	3.500	4	
TF780	1" - 2" NPT	11.5	0.620	0.625	1.125	4.000	4	

Valcarb

Metalworking Tools, Accessories and Fluids



"Manufacturing Relationships. Distributing Quality"

52 West Beaver Creek Road Unit #1, Richmond Hill ON L4B 1L9

905 597 7705

Fax 905 597 7715

service@valcarb.com