

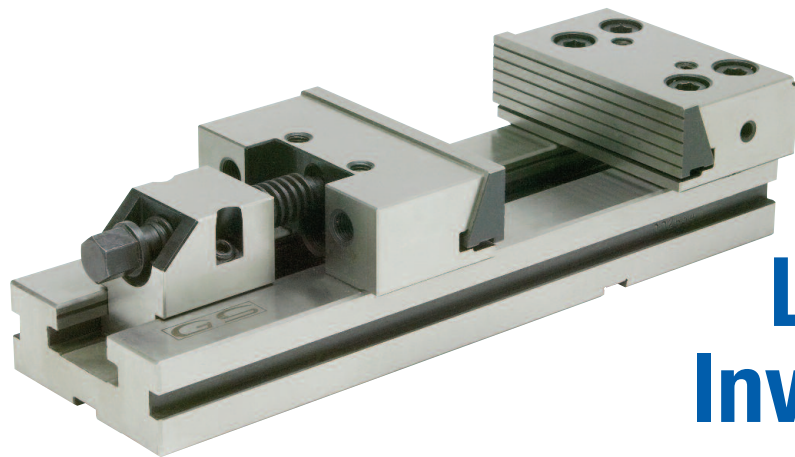


PLAIN BASE MODULAR VISES

Manufactured under rigid quality control. As a result of the high standard construction, GS Vises can be depended upon to maintain their accuracy under the most severe operating conditions. The modular design and the concept of interchangeability makes possible a wide variety of set up combinations.

Features/Benefits:

- High accuracy
- Unlimited clamping range
- High quality alloy steel
- High clamping pressure
- No jaw lift
- All vises are matched



**Local
Inventory**

Code # 382-015 6" x 8"

\$895⁰⁰

Reg. List: \$1,853.40



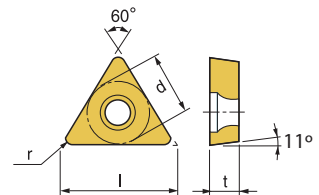
TPUN 322 PTM30U



Code # 146-780Y

\$3⁵⁰

Reg. List: \$8.10



(inch)			
l	d	t	r
.650	3/8	1/8	1/32